

THE BODY OF CHRIST

Dr Eugenia Nitowski, Curator, Ariel Museum, Utah, USA

In 1986 I published the findings of the group known as the Environmental Study of the Shroud in Jerusalem (ESSJ)(1). While we announced our findings about the image process, another, perhaps equally great discovery was eclipsed, that of the finding of a microscopic muscle fragment (Fig 1) from the dorsal side of the Shroud (lower back).

The location had been designated 3BB (Fig 5) by STURP in 1978. Since 1986 I have come across additional evidence that this particle is indeed muscle. Kathleen Kenyon, during her excavation of the Middle Bronze Age towns (1850 - 1550 BC) at Jericho (2) came across meat left as food for the dead to help them in the next life. Her photomicrograph (Fig 2) shows striking similarity to our fragment, namely the fibers separating off the main body of the fragment. This can also be illustrated by modern examples as in Figures 3 and 4.

It seems clear that the old argument that such organic material could not remain is groundless since the Jericho sample is at least 1,500 years older and still recognisable.

NOTES

1. Nitowski, Eugenia, *The Field and Laboratory Report of the Environmental Study of the Shroud in Jerusalem*, (Salt Lake City, Utah, 1986)
2. Kenyon, Kathleen, *Excavations at Jericho*, Vol II: XXXIII:1, (London, 1965)

THE BODY OF CHRIST - NITOWSKI (cont'd)



Fig 1. Muscle fragment from the Shroud, sample 3BB from the dorsal image lower back (650X by Joseph Kohlbeck)

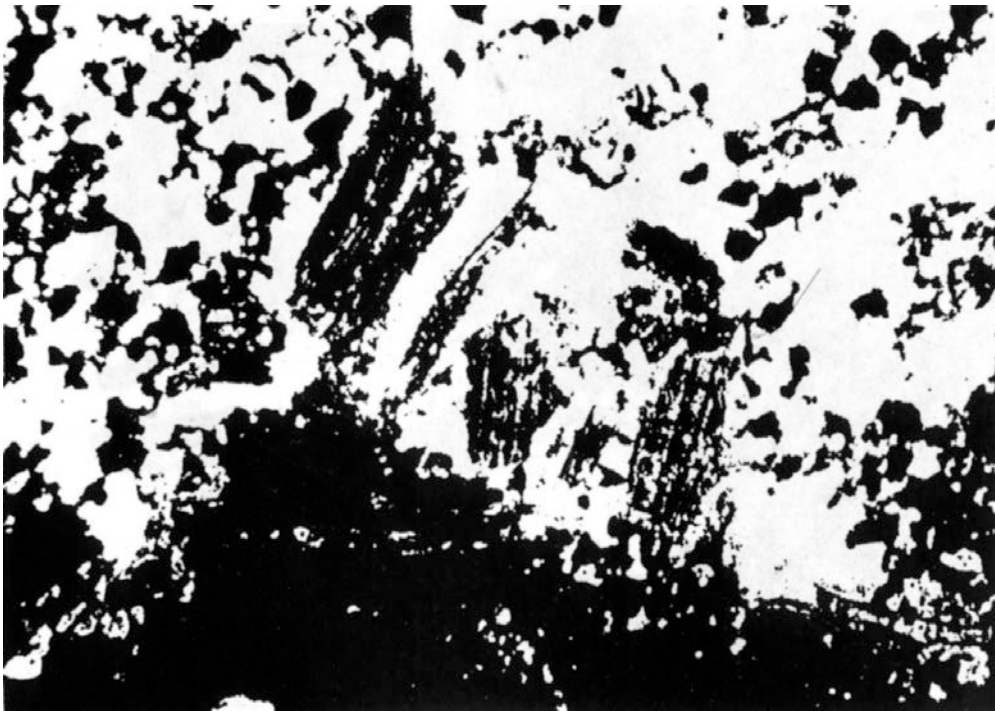


Fig 2. Meat from Jericho Tomb G1. (Kathleen Kenyon)

THE BODY OF CHRIST - NITOWSKI (cont'd)

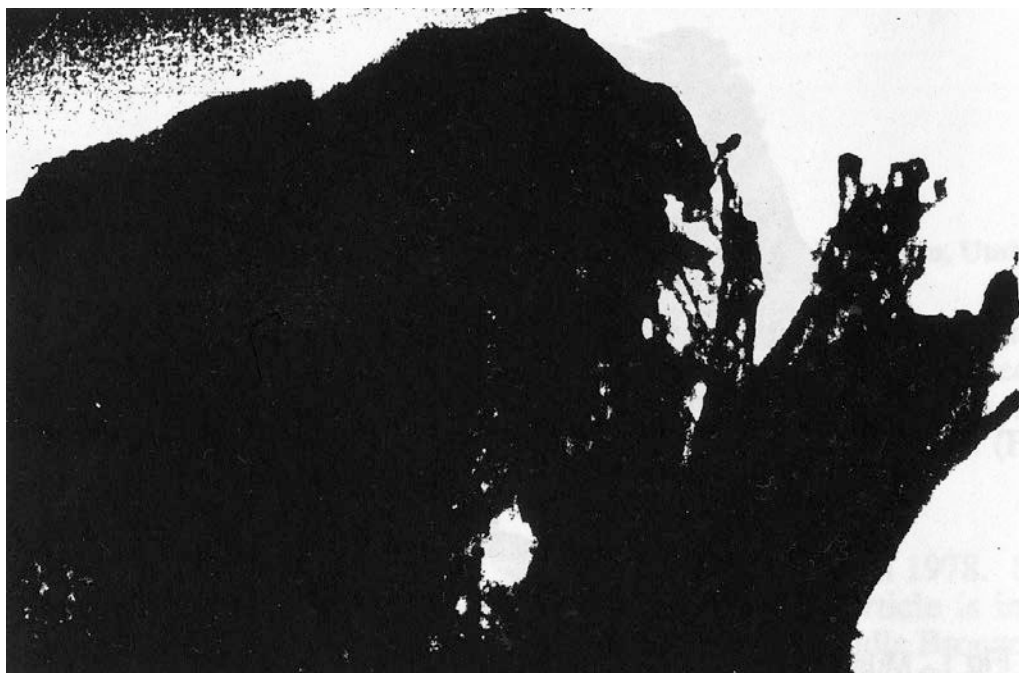


Fig 3. Fresh muscle fragment (40X Nitowski)

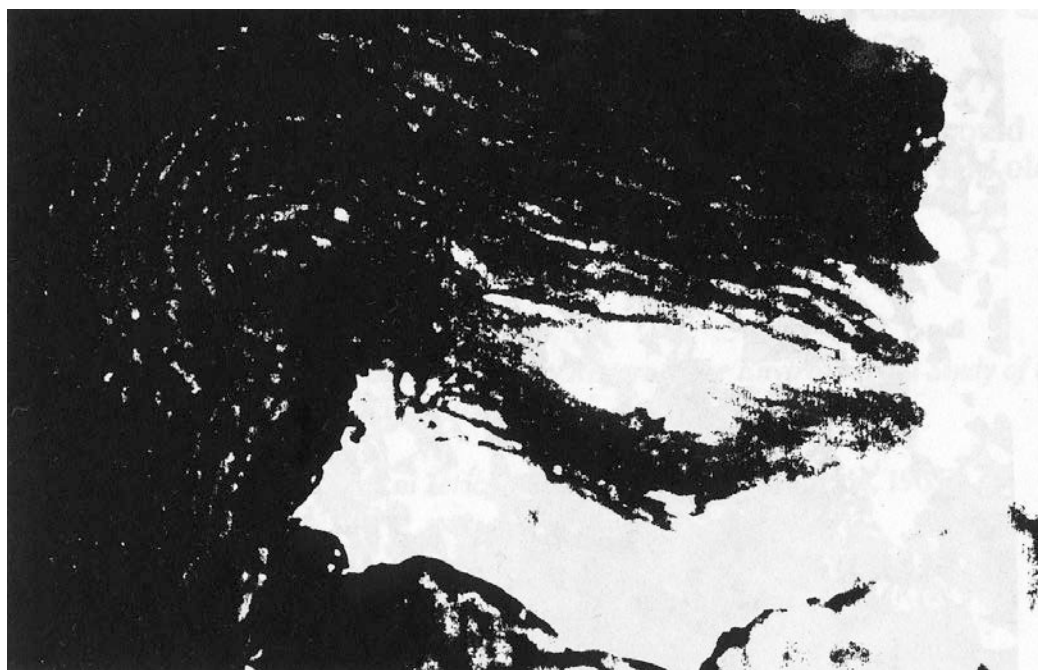


Fig 4. Fresh muscle fragment (40X Nitowski)

THE BODY OF CHRIST - NITOWSKI (cont'd)

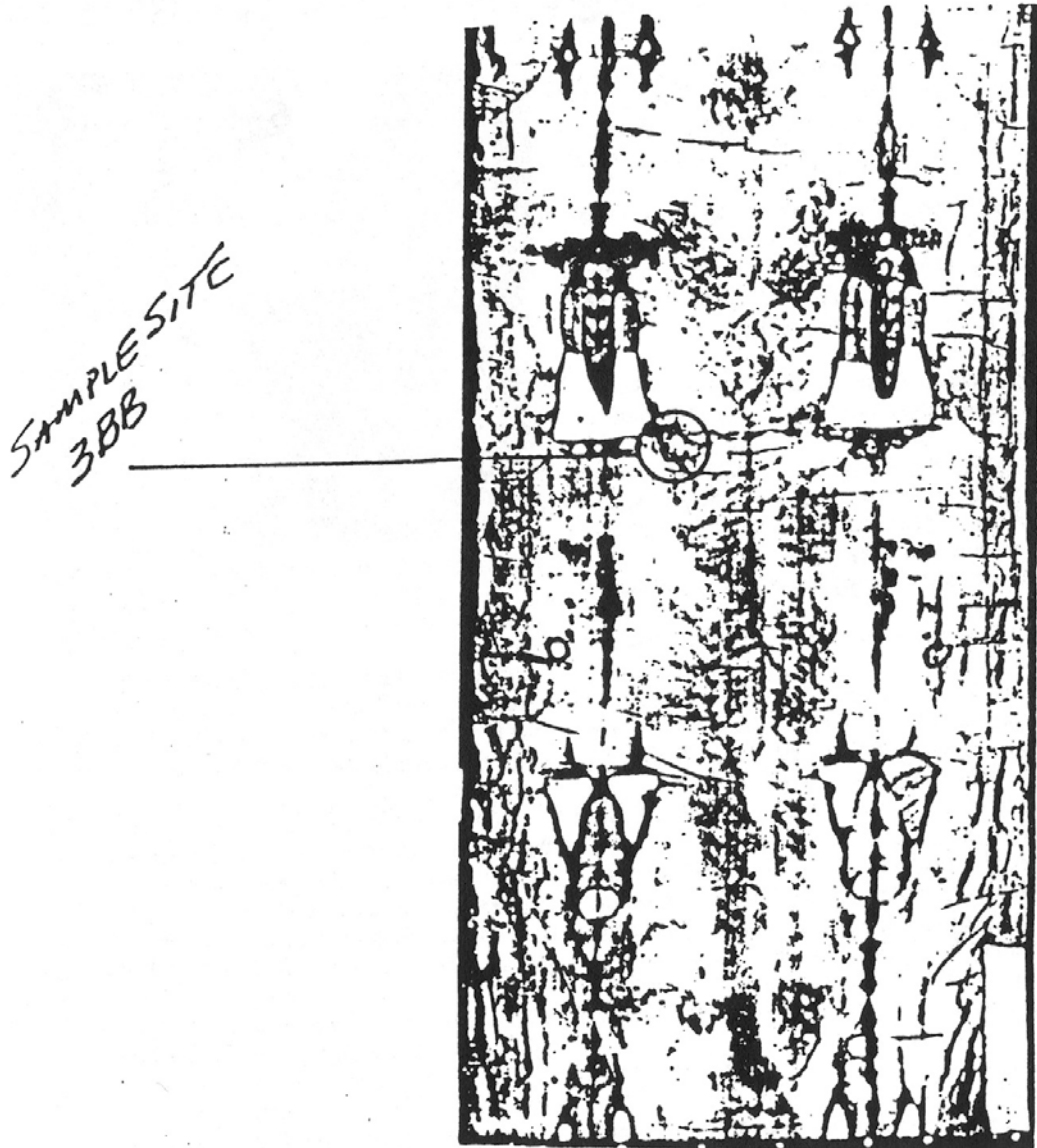


Fig 5. Location site for sample 3BB, Shroud of Turin, dorsal view